

What is infertility?

Infertility is the inability to achieve pregnancy after **12 months or more** of regular, unprotected sexual intercourse (or after **6 months** if the woman is older than 35).

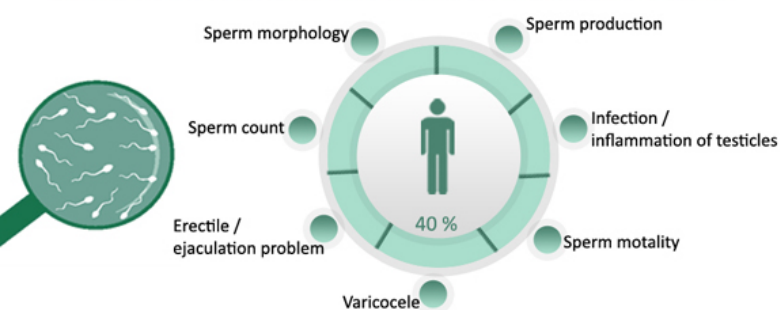
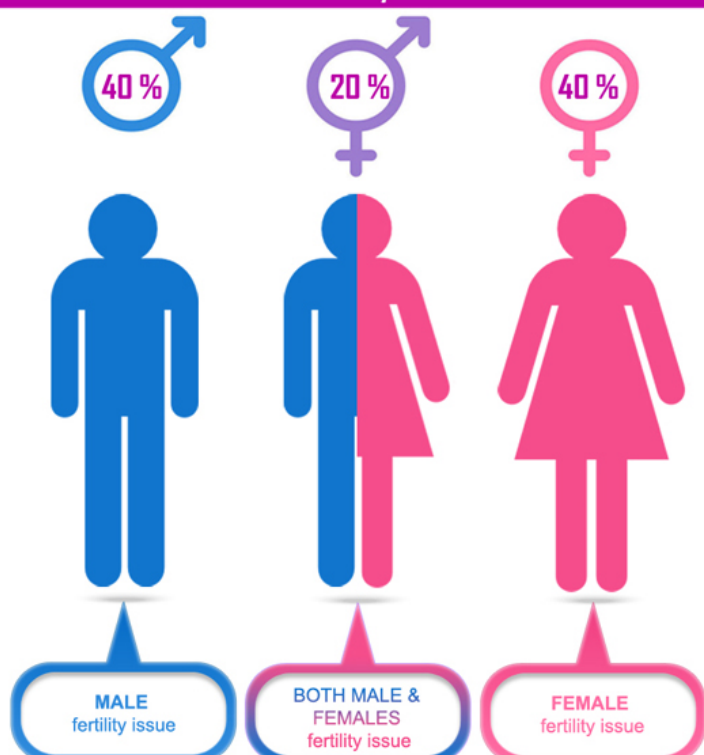
12+ months

6+ months

Worldwide, 1 in 6 couples struggle with some form of fertility issues



Causes of infertility are contributed



Common causes of infertility in women

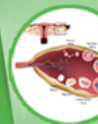
Endometriosis

Growth of cells from the uterine lining outside of the uterus



Ovulatory Disorder

Hormonal issue, failure to ovulate
85% is contributed by PCOS



Fallopian Tube Blockage

Can prevent movement of egg to sperm or movement of fertilized egg into uterus
- Linked to 25% of female infertility cases



Uterine Factors

Fibroid, anomaly of uterus



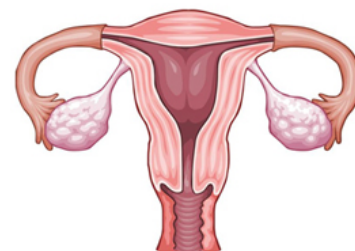
Unexplained Infertility

- Linked to 10% of female infertility cases

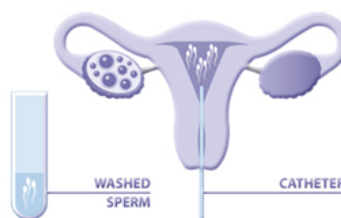


Treatment Modalities

Controlled ovarian hyperstimulation



Intrauterine Insemination (IUI)



Invitro Fertilization (IVF)

